

Open in browser the link:
KOLEJSIT.CZU.CZ

Česky English ČZU

Česká zemědělská univerzita v Praze

WiFi
kolejnisit.czu.cz

Main page Regulations FAQ Setting PC Setting WiFi Contact

Web-site for Dormitory connection network (DCN) users' management

- o a new DCN user has to register using school login (or UIČ No. - see Student Card)
- o registered user logs in by school login or by UIČ No.
- o frequently asked questions and answers are situated in FAQ section
- o computer setting guide is also available
- o every DCN user is obligated to follow the Regulations

Actual information and connection restrictions

No planned interrupts in the Dormitory connection network.

Enter the application

login

pass

Log in

I want to register


Materiály umístěné na tomto serveru mohou být publikovány pouze se souhlasem ČZU.
© 2010 - Všechna práva vyhrazena ~ ČZU

Press this link to register



1. Enter your (Xname) student email, for ex:
xhong201@studenti.czu.cz
2. Enter password, for ex: 1234
3. Don't forget to read and confirm agreement then pres register

Main page Regulations FAQ Setting PC Setting WiFi Contact



Enter the application

login

pass

Log in

[I want to register](#)

A new user registration

- o CULS students register using school login (xabcd123) and valid password
- o workers register using their Novell network login name
- o others register using the dormitory card no. (5 digits) or UIČ (see Student Card) and create a password
- o read the Regulations first and confirm Your agreement

login or UIČ No. 1 school login or UIČ No.

password 2 password for login

I confirm my agreement with the [Regulations](#)

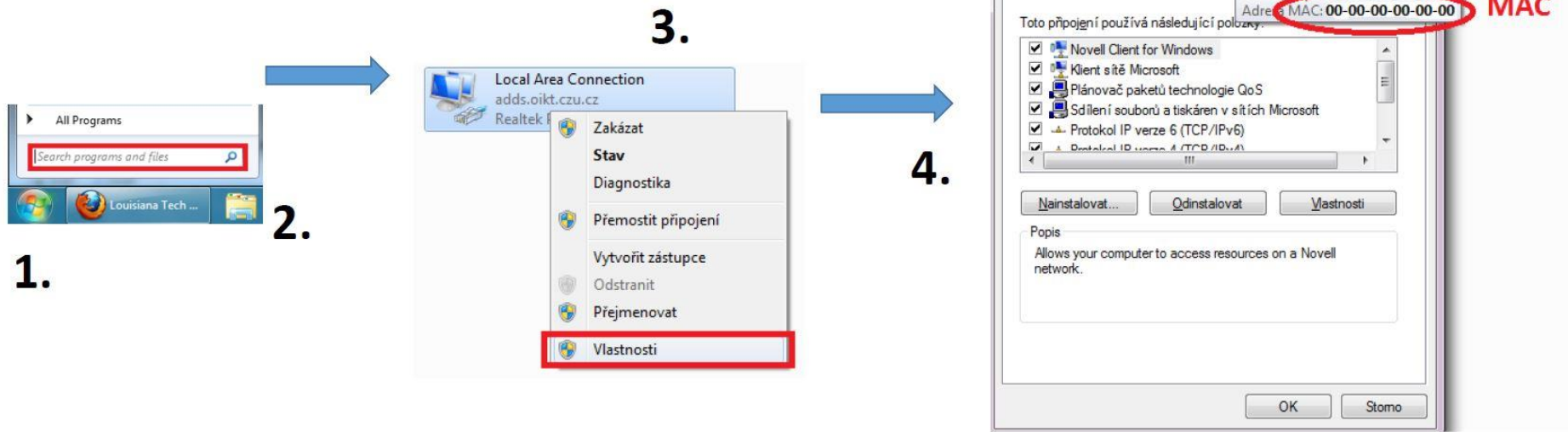
3 **Register**

Materiály umístěné na tomto serveru mohou být publikovány pouze se souhlasem ČZU.
© 2010 - Všechna práva vyhrazena v ČZU

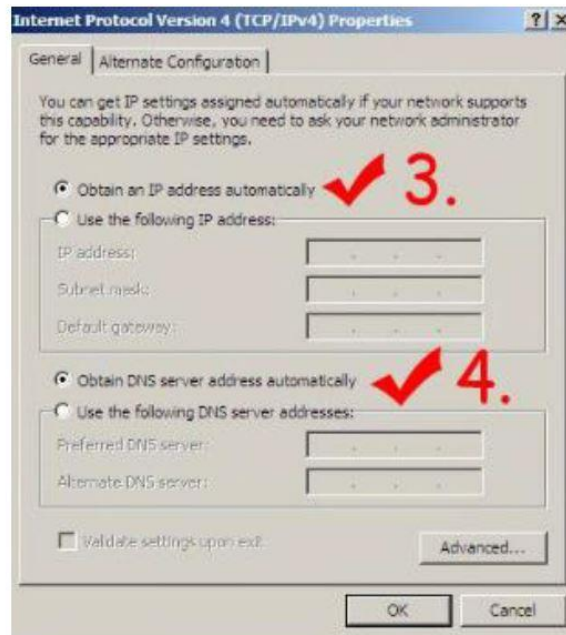
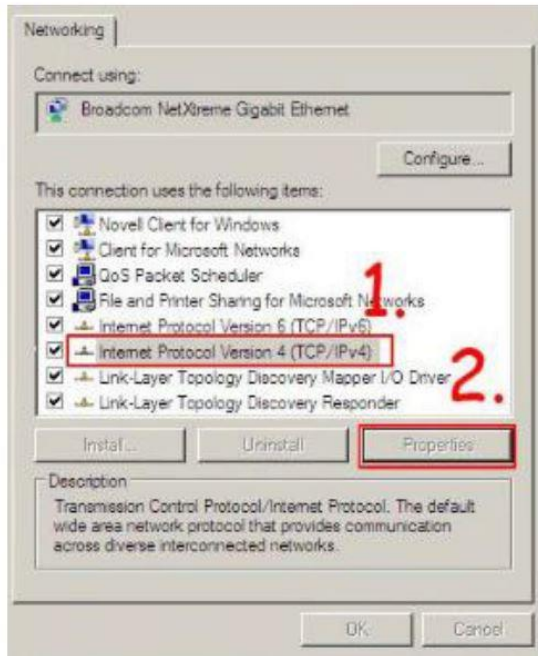


Steps to get your PC's MAC address

- 1) Click the Start Menu at the bottom left of your screen on your PC.
Users with Win 8 navigate mouse to right corner to appear search box
- 2) Type **NCPA.CPL** into the search box and press ENTER.
- 3) Right-click your **Local Area Connection** (cable icon) and select **Properties**.
- 4) Mouse cursor over name of LAN card show you MAC Address of your PC.



CORRECT SETTING IN YOUR PC / NOTEBOOK



**1. Choose Protocol
IP Version 4 (TCP/IPv4)**

2. Select Properties

3. a 4. Obtain Automatically

After getting registered and knowing your MAC address.

You should be logged in to Kolejsit.czu.cz with your login and password

1) Then press **Change info**

2) Enter your MAC address inside box in form
00:00:00:00:00:00

3) Press execute requested changes

The screenshot shows the user interface of the KOLEJSIT system. At the top, there is a navigation bar with links: Main page, Regulations, FAQ, Setting PC, Setting WiFi, and Contact. On the left, there is a 'User menu' with a blue box, 'account is active', and links for 'Info overview', 'Change info' (highlighted with a red box and labeled '1'), and 'Log out'. Below the menu, it says 'Login expires 14. 09. 2015, 17:34'. The main content area has three sections: 'Password change' with input fields for 'new password' and 'confirm password'; 'Your contact e-mail address change' with an input field for 'e-mail address'; and 'Your MAC address change - cable (LAN) connection' which includes a warning about 'Local Area Network' and a table for MAC address registration. The table has columns for 'MAC address', 'producer', 'IP address', and 'dormitory network'. The 'MAC address' input field is highlighted with a red box and labeled '2', with a blue arrow pointing to it. Below the table, the 'Execute requested changes' button is highlighted with a red box and labeled '3'.

Note: You will be connected to internet in max 2 hours after doing all steps